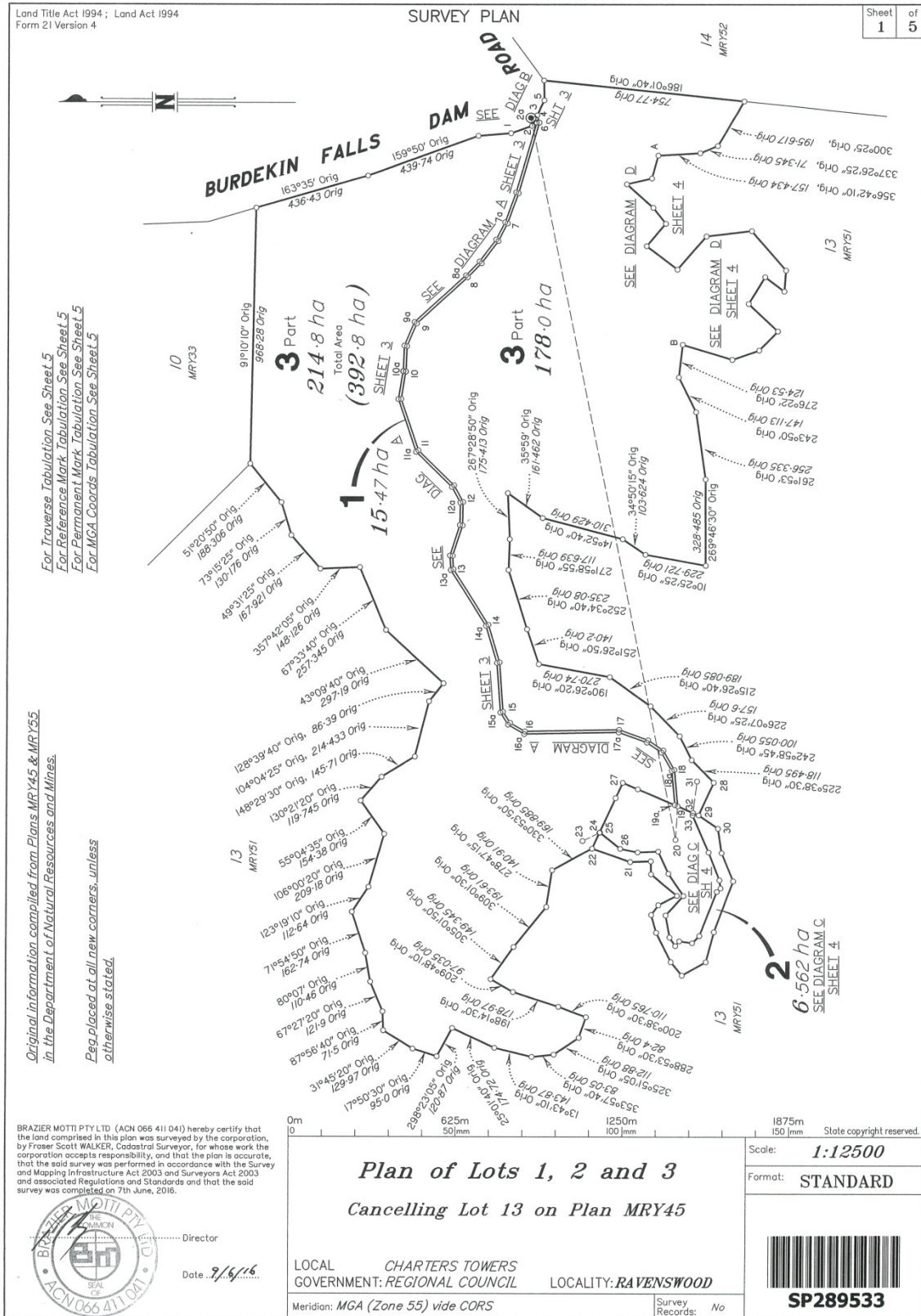


**Part B – Plan of Determination Area**











Land Title Act 1994 ; Land Act 1994  
 Form 21A Version 1

ADDITIONAL SHEET

Sheet 5 of 5

M.G.A. COORDINATES GDA-94

STATION	EASTING	NORTHING	ZONE	P.U.	LINEAGE	METHOD	REMARKS
PM66612	510 035-673	7 719 996-635	55	0-011	Derived	Auspos	OPM
20	507 301-368	7 719 445-360	55	0-012	Derived	Auspos	I.Pin

REFERENCE MARKS

STN	TO	ORIGIN	BEARING	DIST
1	OIP	10a/MRY33	258°03'40"	1-36
2	OIP	9a/MRY33	45°05'40"	1-53
5	OIP	8a/MRY33	12°05'30"	1-52
6	I.Pin		193°07'	1-345
7	I.Pin		246°42'	6-86
8	I.Pin		313°12'	6-18
9a	I.Pin		210°13'	4-23
10	I.Pin		275°16'	17-005
11a	I.Pin		72°12'55"	19-095
12	I.Pin		347°55'	3-22
13a	I.Pin		61°25'	5-415
14	I.Pin		218°55'	2-01
14a	I.Pin (Photo Marker)		18°07'	42-23
	Id			
15a	I.Pin		304°23'	4-775
16	I.Pin		179°02'05"	88-7
17	I.Pin		355°55'20"	9-075
18	I.Pin		219°21'	1-58
20	I.Pin (FW104) in Bit (Flush)		at Station	
21	OIP	33/MRY45	19°37'	1-0
22	OIP	32/MRY45	330°53'50"	1-0
23	OIP	81/MRY55	153°33'30"	2-0
25	OIP gone	80/MRY55	333°33'20"	2-0
25	I.Pin		336°56'	2-085
25	ORT Rmns	80/MRY55	345°06'	12-975
26	OIP	79/MRY55	11°40'20"	2-0
27	I.Pin		9°42'25"	7-575
28	OIP	48/MRY45	294°14'25"	1-0
28	ORT (Not Searched)	48/MRY45	317°34'40"	14-57
29	OIP gone	47/MRY45	223°23'40"	1-8
30	OIP	46/MRY45	261°21'10"	1-0
31	OIP	63/MRY55	277°04'30"	2-0
31	ORT gone	63/MRY55	341°05'	13-845
32	I.Pin		97°32'	2-9
33	OIP	64/MRY55	97°04'30"	1-84

PERMANENT MARKS

PM	ORIGIN	BEARING	DIST	NO	TYPE
2a-OPM	41/MRY33	at Station		66612	S.Pkt
5-OPM gone	156/MRY55	at Station		89725	S.Pkt

TRAVERSES ETC

LINE	BEARING	DISTANCE	
2-2a	81°44'25"	30-78	
2a-20	258°36'05"	2790-545	New Conn
6-6a	359°49'15"	10-42	
7-7a	23°26'35"	10-02	
8-8a	45°41'35"	10-005	
9-9a	35°17'50"	10-22	
10-10a	5°45'05"	10-02	
11-11a	328°07'30"	10-28	
12-12a	346°32'50"	10-335	
13-13a	342°14'35"	10-325	
14-14a	335°39'50"	10-095	
15-15a	341°39'	10-31	
16-16a	284°40'30"	10-39	
17-17a	279°23'20"	10-17	
18-18a	342°28'50"	10-235	
19-19a	23°30'	11-405	
19-20	273°15'15"	127-48	
23-24	153°33'30"	69-405	
31-32	277°04'30"	121-22	

Survey Report

**Methodology**

The survey was carried out using a combination of approved GNSS techniques and traditional methodologies.

AusPos observations were completed at station 2a (OPM 66612) and had been previously observed at station 20 (I.Pin in Bitumen).

The base station was setup at Stn 20, double GNSS observations more than 4hrs apart using tripods, were made to two temporary marks that offered the greatest line of sight between them (740m).

The distance between these marks was measured using EDM (temp and pressure corrections applied) and used to scale the meaned GNSS observations. This was compared to the calculated combined (terrain height included) scale factor and found to be in good agreement.

The Calculated AusPos position of OPM66612 agreed well with the RTK location observed.

All existing and new marks observed by GNSS were observed at least twice on different days, with reference marks observed using a tripod.

**Fixation of the Boundary.**

The corners of the existing boundary abutting Burdekin Fall Dam Rd were fixed by the OIP's referenced on MRY33.

The corner at Stn 22 was remarked from its OIP and the OP and OIP at Stn 21, the distance between the corners was to found to be deed.

The OP and OIP at Stn 25 were both gone, it was reinstated from the OIP and OP at Stn 23 and the OIP and OP hole at Stn 26. Deed distances were observed and deed angle at Stn 25 maintained.

The OP and OIP at Stn 29 were both gone, it was reinstated from the OIP and OP at Stn 28 and the OIP and OP at Stn 30. Deed distances were observed and deed angle at Stn 29 maintained.

The corner at Stn 33 was remarked from its OIP and the OP and OIP at Stn 31, the distance between the corners was found to be deed.

State copyright reserved.

Insert Plan Number SP289533

50mm 100mm 150mm

411371002 STJ